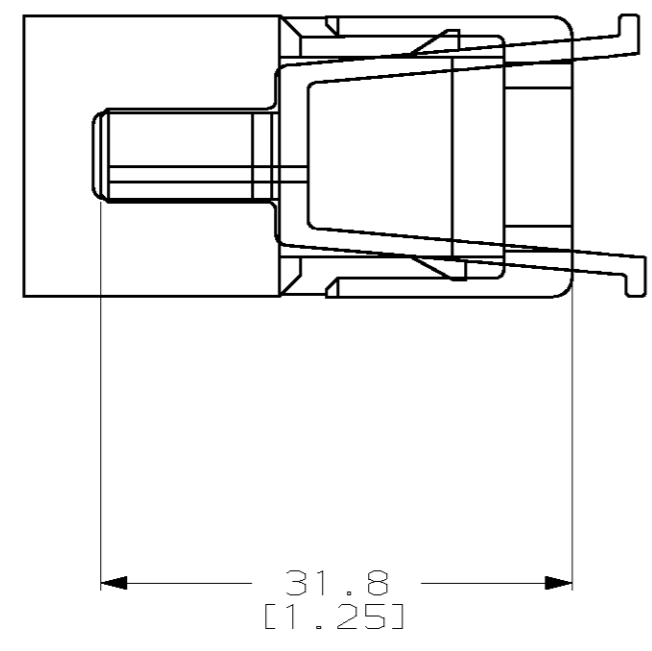
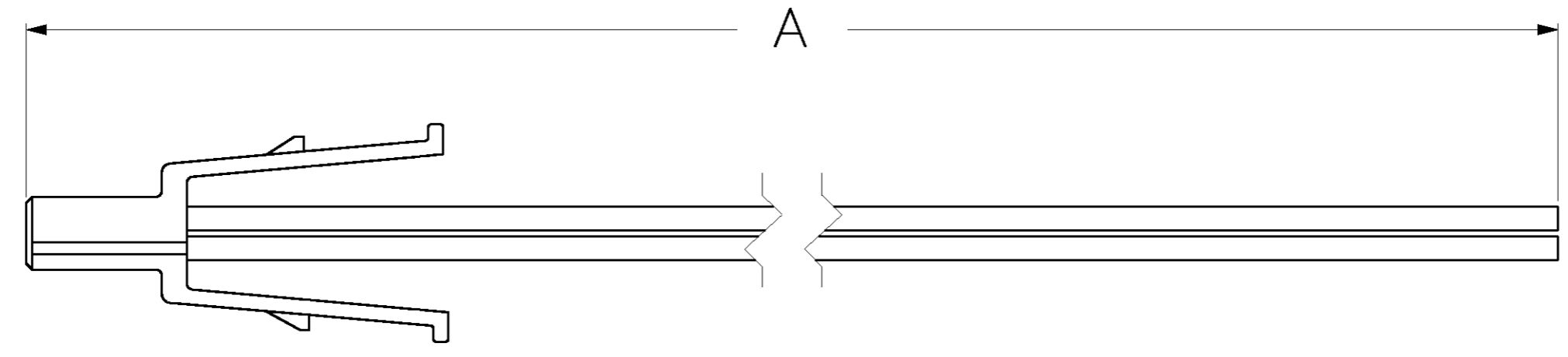
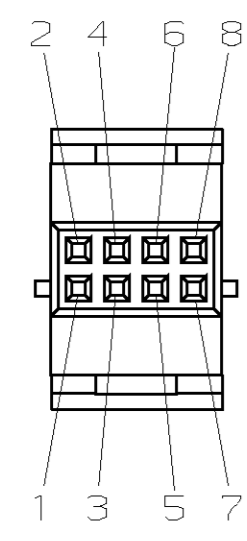


THIS DRAWING IS UNPUBLISHED. RELEASED FOR PUBLICATION
 (C) COPYRIGHT 19 BY AMP INCORPORATED. ALL RIGHTS RESERVED.

*AMPOWER is a trademark

LOC		DIST		REVISIONS			
P	LTR	DESCRIPTION	DATE	DWN	APVD		
GP	00	W		REVISE PER 0520-089-02	08MAY02	ECC	LPM

- CABLE LENGTH TOLERANCE ON 0-150 INCH LONG CABLES = +0.2% -0% OF TOTAL CABLE LENGTH WITH A MINIMUM TOLERANCE OF +6.4 [.25] 0 [0]. CABLE LENGTH TOLERANCE ON CABLES OVER 150 INCHES LONG = + 1% -0% OF TOTAL CABLE LENGTH.
- GW = 1 GREEN AND 1 WHITE WIRE CRIMPED INTO EACH CRIMP SOCKET.
- LABEL PER AMP 2480.0903.MPI.
- BECAUSE OF SHIPPING CONSTRAINTS, REFOLDING/SHAPING OF CABLE ASSEMBLY MAY BE REQUIRED BY CUSTOMER BEFORE INSTALLATION.



WHEN USED IN CONNECTOR
(REF ONLY FOR LENGTH CALCULATIONS IN ASSY)

-	-	-	-	-	-	BLK	RED	-	762.0 [30.00]	PVC	22 AWG	2-765327-4
-	-	-	-	-	-	BLK	RED	-	317.5 [12.50]	PVC	22 AWG	2-765327-3
X	X	X	X	X	X	X	X	-	2775.0 [109.25]	PVC	22 AWG	2-765327-2
WHT	BLU	BLK	VIO	GRY	GRN	RED	BRN	-	233.7 [9.20]	PVC	22 AWG	2-765327-1
-	-	-	-	-	-	-	-	-	-	-	-	2-765327-0
X	X	X	X	X	X	X	X	-	181.6 [7.15]	PVC	22 AWG	1-765327-9
X	X	X	X	X	X	X	X	-	1600 [63.00]	PVC	22 AWG	1-765327-8
X	X	X	X	X	X	X	X	-	6172 [243.00]	PVC	22 AWG	1-765327-7
WH	--	YW	--	BK	--	RD	--	-	185.4 [7.30]	PVC	22 AWG	1-765327-6
X	X	X	X	X	X	X	X	-	342.9 [13.50]	PVC	22 AWG	1-765327-5
X	X	X	X	X	X	X	X	-	635.0 [25.00]	PVC	22 AWG	1-765327-4
X	X	X	X	X	X	X	X	-	177.8 [7.00]	PVC	22 AWG	1-765327-3
X	X	X	X	X	X	X	X	-	152.4 [6.00]	PVC	22 AWG	1-765327-2
X	X	X	X	X	X	X	X	-	1000 [39.37]	PVC	22 AWG	1-765327-1
X	X	--	--	--	--	X	X	-	558.8 [22.00]	TEF	22 AWG	1-765327-0
X	X	X	X	X	X	X	X	-	406.4 [16.00]	TEF	22 AWG	765327-9
GW	GW	GW	GW	GW	-	GW	-	-	939.8 [37.00]	PVC	28 AWG	765327-8
X	X	X	X	X	X	X	X	-	914.4 [36.00]	PVC	22 AWG	765327-7
GW	GW	GW	GW	GW	GW	GW	GW	-	939.8 [37.00]	PVC	28 AWG	765327-6
X	X	X	X	X	X	X	X	-	203.2 [8.00]	TEF	22 AWG	765327-5
X	X	X	X	X	X	X	X	-	457.2 [18.00]	TEF	22 AWG	765327-4
X	X	X	X	X	X	X	X	-	152.4 [6.00]	TEF	22 AWG	765327-3
-	-	--	--	--	--	--	--	-	-	-	-	765327-2
X	X	X	X	X	X	X	X	-	304.8 [12.00]	TEF	22 AWG	765327-1
8	7	6	5	4	3	2	1	-	CABLE ASSEMBLY LENGTH A	STYLE	CONDUCTOR THICKNESS	PART NUMBER

OBSOLETE

WIRING SEQUENCE

DIMENSIONS: mm [INCH]		TOLERANCES UNLESS OTHERWISE SPECIFIED: 0 PLC ±- 1 PLC ±0.5 [.021] 2 PLC ±0.25 [.010] 3 PLC ±- 4 PLC ±- ANGLES ±- FINISH -		DWN 12-10-91 D.A. BABOW CHK 12-10-91 D.E. PETRIE APVD 12-10-91 J.E. LUCIUS PRODUCT SPEC APPLICATION SPEC 114-49005 WEIGHT - CUSTOMER DRAWING		AMP AMP Incorporated Harrisburg, PA 17105-3608 NAME AMPOWER* Wave Crimp System CABLE ASSEMBLY SIZE A2 CAGE CODE 00779 DRAWING NO. C=765327 SCALE FULL SHEET 1 OF 1 REV W	
--------------------------	--	--	--	--	--	---	--